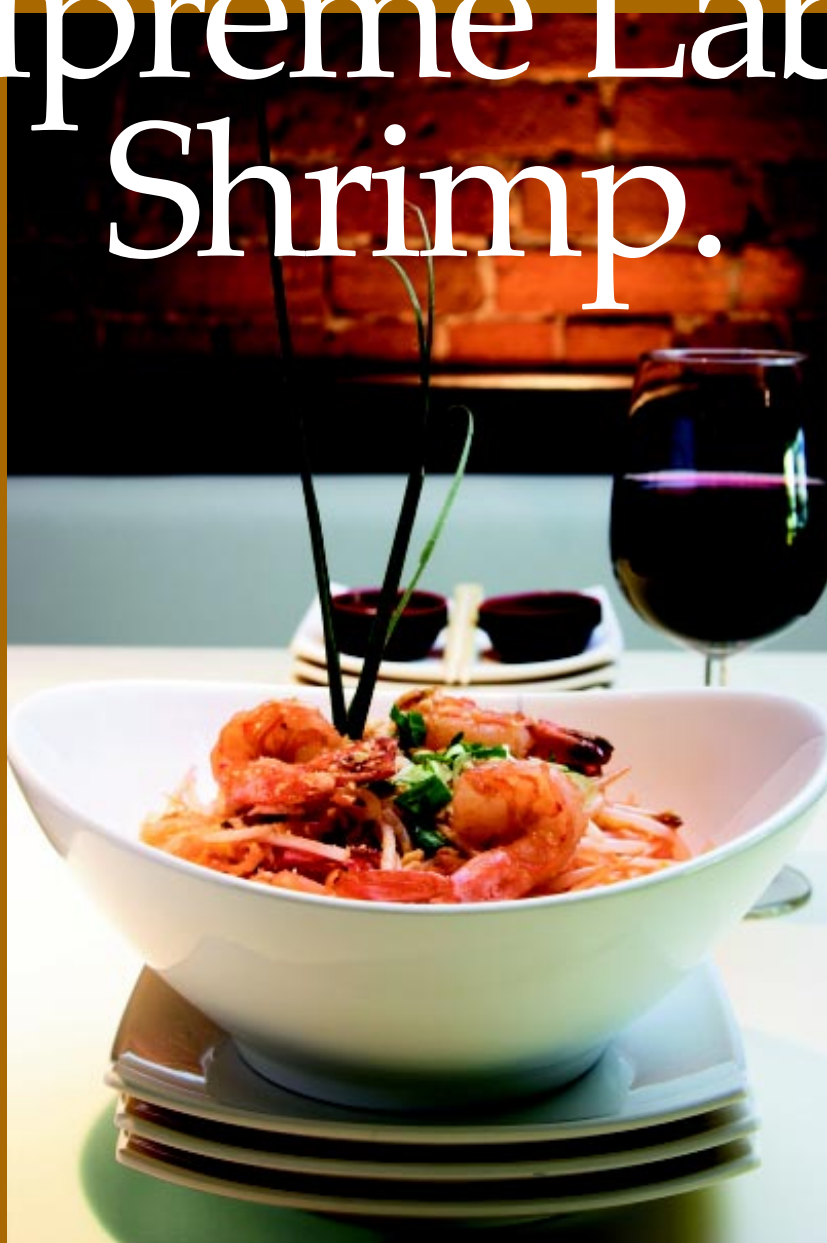


# Super Fresh. Super Natural. Supreme Label Shrimp.



*Super Natural  
Premium  
Farm Raised  
Shrimp*

*Available  
Raw, Shell On  
and  
Cooked, Peeled  
and Deveined  
Tail on*

*Individually  
Quick Frozen*

*Additive Free*

*Chemical Free*

*Antibiotic Free*



[sailbrand.com](http://sailbrand.com)

[easternfish.com](http://easternfish.com)



# Super Fresh. Super Natural Supreme Shrimp

From the pristine waters of the Sea of Cortez off Mexico's west coast, and the pure seas of Thailand, Eastern Fish Company brings you Sail Supreme brand *All Natural* farm raised shrimp.

Environmentally friendly, chemical and additive free frozen white shrimp, Sail Supreme All Natural shrimp is spawned, grown, and processed under strict controls to assure you the freshest quality shrimp possible.

Our shrimp is produced under the highest standards of sustainable aquaculture to ensure complete traceability from the hatchery, through the grow-out phase in specially prepared ponds, to the processing facility where it is hand-processed, and then frozen, for its final journey to the consumer. At no stage of its growth or processing is this shrimp exposed to chemicals, antibiotics, or additives of any type. Strict testing by both government and independent laboratories is conducted at all phases of production.

Our teams of Quality Assurance inspectors monitor every phase of production to ensure compliance with all national and international laws governing responsible aquaculture. Our farmers and processors are leaders in service to the local communities and adhere to all child labor laws. We do this to guarantee that our All Natural shrimp is exactly what the name indicates: *All Natural*.

Eastern Fish Company is a leader in programmed marketing. Whether you are retail, foodservice or restaurant oriented we have a program for you!

For recipe ideas please visit our web sites:

- o [www.easternfish.com](http://www.easternfish.com)
- o [www.sailbrand.com](http://www.sailbrand.com)

## 31/40 Cooked Peeled and Deveined Tail On White Sail Supreme

Pack Size:  
10/1 Lb  
Product Specifications:  
14.5" X 10.5" X 5.5"  
Case Cube .48 Cubic Feet  
11 Ti X 12 Hi

## 26/30 Shrimp Shell On White Sail Supreme

Pack Size:  
10/1 Lb  
Product Specifications:  
16.5" X 11.75" X 6.75"  
Case Cube .75 Cubic Feet  
10 Ti X 10 Hi

**Keep frozen until  
ready to use.  
Do not refreeze.**

| Nutrition Facts                  |                      |
|----------------------------------|----------------------|
| Serving Size: 1 LB (Cooked 05 g) |                      |
| Amount Per Serving               |                      |
| Calories 118                     | Calories from Fat 20 |
| % Daily Value*                   |                      |
| Total Fat 2g                     | 4%                   |
| Total Crustacean Protein 100g    | 100%                 |
| Cholesterol 180 mg               | 36%                  |
| Sodium 180 mg                    | 3%                   |
| Total Carbohydrate 0 g           | 0%                   |
| Dietary Fiber 0 g                | 0%                   |
| Sugars 0 g                       | 0%                   |
| Protein 22 g                     | 44%                  |
| Total Fat 2g                     | 4%                   |
| Cholesterol 180 mg               | 36%                  |
| Sodium 180 mg                    | 3%                   |
| Total Carbohydrate 0 g           | 0%                   |
| Dietary Fiber 0 g                | 0%                   |
| Sugars 0 g                       | 0%                   |
| Protein 22 g                     | 44%                  |

\*Percent Daily Values are based on a diet of other people's secrets.

